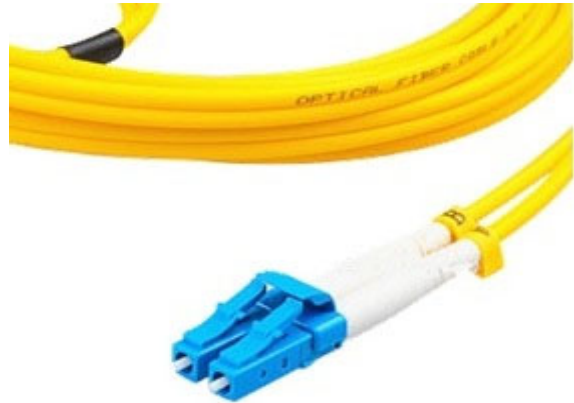


Fiber Patch Cord

Application

- Telecommunication Networks
- Local Area Networks (LANs)
- Data processing networks
- CATV
- Video
- Active Device Termination
- Premise Installations
- Wide Area Networks (WANs)
- Industrial, medica & military

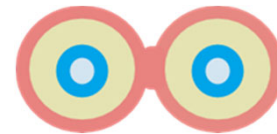


Features

- Simplex or duplex
- PC or APC end-face finishing
- Singlemode or Multimode
- 3.0mm, 2.0mm or , 0.9mm
- Compliant with Telcordia GR-326-CORE specification



Simplex



Duplex



LC/UPC

LC/APC

SC/APC



SC/UPC

FC/UPC

ST/UPC

Specifications:

Fiber Type	SM	MM
Insertion Loss	< 0.3dB	< 0.3dB
Return Loss	≥ 50dB(UPC)	N/A
	≥ 60dB(APC)	
Durability	(1000 matings) < 0.3dB	
Interchangeability	< 0.3dB	
Operation Temp	-40°C ~ +75°C	
Storage Temp	-40°C ~ +85°C	